



A smooth face, brushed back and coverstitching make this warm fleece vest a classier alternative to more casual fleece.

- Can be zipped in and secured by snap attachment inside an outer Collective layer
- 5.9-ounce, 100% polyester fleece
- Dyed-to-match and contrast coverstitch
- Slightly longer length
- Molded center front zipper
- Front reverse-coil zippered pockets

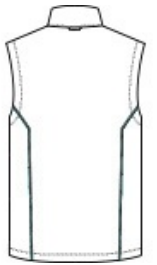
\*\*

**CARE INSTRUCTIONS**

Machine Wash Cold With Like Colors. Do Not Use Fabric Softener. Tumble Dry Low. Remove Promptly. Only Non-Chlorine Bleach When Needed. Cool Iron If Necessary. Do Not Dry Clean.



front



back

**HOW TO MEASURE**



**CHEST WIDTH**

Measure under the arm and around the fullest part of the chest with arms down, keeping tape horizontal.

**SIZE CHART**

	XS	S	M	L	XL	2XL	3XL	4XL
Chest	32-34	35-37	38-40	41-43	44-46	47-49	50-53	54-57

**COLOR INFORMATION**



Deep Black  
PMS NTR BLACK



Graphite  
PMS 425C



River Blue Navy  
PMS 533C